

SIGVARIS
GROUP

**COMPRESSION
SOLUTIONS**



Life changes. Your lifestyle doesn't have to.

At Sigvaris, we care about people. For 155 years, our compression products have offered effective and reliable solutions for venous conditions – anywhere, anytime, and for anyone.

As a Sigvaris Certified Fitter, when you provide **the Sigvaris solution** to your clients, you're helping them move with life, without compromise. Because you care about people too. And that's why we're proud to work with Fitters like you.

Our shared passion for helping people is what got us here, and we're excited to take our next step towards wellness together.

Let's take a look at what we've got in store.

Live your life.

You know your clients. They trust you to help them feel their best.

Sigvaris understands that people want to be their best selves – everywhere, every day. So we're making it even easier for you to find the right solutions for everyone.

You told us what your clients need and we are proud to continue delivering the **FREEDOM, SECURITY, and SELF-CONFIDENCE** that keeps them coming back.

Our products aren't changing. We are still the forward-thinking leader you rely on and trust. You know that Sigvaris Medical products are made in our own factories, from premium double-covered spandex yarns and fibres. Our sizing system ensures exceptional comfort, and we guarantee the compression of our socks for six months – even after they are machine washed and dried. But what your clients don't know about us might surprise them.

The Sigvaris Solution:

- Medical effectiveness and reliable relief.
- Best-in-class quality, craftsmanship, and durability.
- Premium yarns like Merino wool and Sea Island cotton.
- Freedom of movement, comfort, and fit.

Essential

ESSENTIAL

Support Yourself

Sigvaris Essential solutions always meet your clients' needs. These straightforward stockings are an everyday go-to for people who seek the comfort, support and reliability of traditional therapeutic socks and stockings.

Why choose **Essential**?

- Reduce or completely eliminate edema.
- Long-distance travel.
- Everyday comfort and reliability.

230

Essential COTTON

for women & men

Essential Cotton combines all-day cotton comfort and a classic ribbed design that is ideal for sensitive skin.



**Sensitive
Skin**



Cotton



Breathable

Compression Level

20-30mmHg

30-40mmHg

Features and Benefits

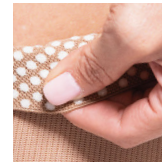
- Supima® cotton for highest level of comfort and breathability
- Ideal for sensitive skin and allergies
- Double-covered inlay yarns provide comfort and allow product to easily glide on and off
- Soft to the skin with a silicone dot band to prevent slipping

Fibre Content

- 50% Nylon, 25% Spandex, 25% Supima Cotton (content can vary slightly by style)
- Latex free

Best Suited for

- Containment of various types of edema, including venous edema, phlebolympheidema, and early stages of lymphedema
- All-day cotton comfort in all types of climates
- Ideal for dress or casual shoes
- Ideal for long-distance travel



Silicone
dotted grip-top
band in calf
and thigh



Essential

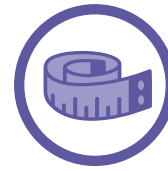
OPAQUE

for women & men

Essential Opaque offers durability you can trust in our largest range of sizes, making it your go-to choice for everyday hosiery.



Durable



**Largest
Size Range**



Opaque

Compression Level

20-30mmHg

30-40mmHg

Features and Benefits

- Largest size range
- Durable construction combined with a smooth, opaque look
- Double-covered inlay yarns provide comfort and allow product to easily glide on and off
- Soft to the skin with a silicone dot band to prevent slipping
- Cotton-lined gusset for pantyhose styles
- Plus size pantyhose great alternative for maternity

Fibre Content

- 64% Nylon, 36% Spandex
(content can vary slightly by style)
- Latex free

Best Suited for

- Containment of various types of edema including venous edema, phlebolympheidema, and early stages of lymphedema
- Post-vein treatment including thermal and non-thermal techniques
- Patients looking for petite and plus-sized options



Silicone
dotted grip-top
band in calf
and thigh

Style

STYLE

Express Yourself

Choice is empowering, and fashion can be as unique as you are. With Sigvaris Style, personality will shine as your clients select from distinctive hosiery and socks.

Why choose **Style**?

- Fashionable, modern patterns and designs.
- Special occasion and formal wear.
- Our most luxurious feel.

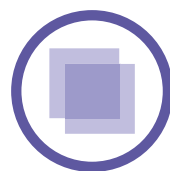
780

Style

SHEER

for women

Style Sheer hosiery offers fashionable sheerness you can feel comfortable in, making it ideal for dress and professional wear.



Sheer



Elegant



Breathable

Compression Level

15-20mmHg

20-30mmHg

30-40mmHg

Features and Benefits

- Fashionable for professional and dress wear
- Consistent sheerness throughout the leg
- Double-covered inlay yarns provide comfort and allow product to easily glide on and off
- Comfortable Sensinnov® top band prevents slipping
- Cotton-lined gusset for pantyhose styles

Fibre Content

- 15-20, 20-30mmHg: 69% Nylon, 31% Spandex (content can vary slightly by style)
- 30-40mmHg: 60% Nylon, 40% Spandex (content can vary slightly by style)
- Latex free

Best Suited for

- Management of early stages of chronic venous disease
- Pre and post vein treatment with minimal edema
- Patients who prefer fashionable options
- Pregnancy
- Ideal for business or dress



Sensinnov
grip-top band
in thigh

750

Style MEDIUM SHEER

for women

Thanks to the durability of Style Medium Sheer, you will have the confidence to wear sheer hosiery all day, every day.



Medium Sheer



Durable



Breathable

Compression level

20-30mmHg

Features and Benefits

- Fashionable, durable, medium sheer hosiery for everyday wear
- Excellent breathability and moisture management
- Double-covered inlay yarns provide comfort and allow product to easily glide on and off
- Soft to the skin with a silicone dot band to prevent slipping
- Cotton-lined gusset for pantyhose styles

Fibre Content

- 68% Nylon, 32% Spandex
(Content can vary slightly by style)
- Latex free

Best Suited for

- Management of early stages of chronic venous disease
- Pre and post vein treatment with minimal edema
- Daily wear for business or casual
- Active professionals needing a durable sheer stocking



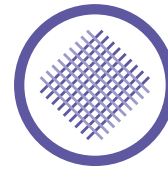
Silicone
dotted grip-top
band in thigh

Style **SOFT OPAQUE** for women

Style Soft Opaque hosiery blends a fashionable opaque look with long-lasting microfiber softness for your professional and everyday wear.



Opaque



Microfiber



Soft

Compression Level

15-20mmHg

20-30mmHg

30-40mmHg

Features and Benefits

- Fashionable opaque hosiery for professional and everyday wear
- Lasting microfiber softness and excellent moisture management
- Double-covered inlay yarns provide comfort and allow product to easily glide on and off
- Comfortable Sensinnov top band on thigh style prevents slipping
- Cotton-lined gusset for pantyhose styles

Fibre Content

- 79% Nylon, 21% Spandex
(Content can vary slightly by style)
- Latex free

Best Suited for

- Management of early stages of chronic venous disease
- Pre and post vein treatment with minimal edema
- Patients who prefer fashionable options
- Pregnancy
- Long distance travel



Sensinnov
grip-top band
in thigh



Silicone
dotted grip-top
band available
in calf

Style PATTERNS

for women

Style Pattern hosiery is available in fashionable patterns, making it a staple for your professional and everyday wear.



Sheer



Elegant



Breathable

Compression Level

15-20mmHg

20-30mmHg

Features and Benefits

- Stylish diamond-dot and stripe patterns for professional and dress wear
- Excellent breathability and moisture management
- Double-covered inlay yarns provide comfort and allow product to easily glide on and off
- Comfortable Sensinnov top band prevents slipping
- Cotton-lined gusset for pantyhose styles

Fibre Content

- 64% Nylon, 36% Spandex
(Content can vary slightly by style)
- Latex free

Best Suited for

- Management of early stages of chronic venous disease
- Pre and post vein treatment with minimal edema
- Patients who prefer fashionable options
- Ideal for business or dress



NEW!

Scalloped Sensinnov thigh band on Stripe patterns*

Sensinnov thigh band on Diamond Dot patterns

220

Style

SEA ISLAND COTTON

for women & men

Style Sea Island Cotton socks are made with the world's rarest cotton, ensuring a luxurious feel that is as soft as cashmere.



Soft



Cotton



Breathable

Compression Level

20-30mmHg

Features and Benefits

- Knitted with the world's rarest cotton for a soft, luxurious feel
- Ideal for sensitive skin
- Double-covered inlay yarns provide comfort and allow product to easily glide on and off

Fibre Content

- 43% Sea Island Cotton, 39% Nylon, 11% Spandex, 7% Supima Cotton
- Latex free

Best Suited for

- Management of symptoms related to chronic venous disease
- Patients who prefer natural fibres
- Long-distance travel



Style

MERINO WOOL

for women & men

Style Merino Wool socks combine extra-fine Australian Merino wool with a stylish design, making it the ultimate sock for year-round wear.

240



Wool



Thermoregulating



Stylish

Compression Level

20-30mmHg

Features and Benefits

- Made with the highest quality extra-fine Merino wool
- Thermoregulating for year-round comfort
- Double-covered inlay yarns provide comfort and allow product to easily glide on and off

Fibre Content

- 53% Merino Wool, 38% Nylon, 9% Spandex
- Latex free

Best Suited for

- Management of symptoms related to chronic venous disease
- Patients who prefer fashionable and premium fabric options
- Long-distance travel

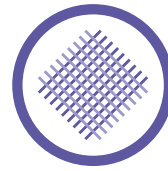


820

Style MICROFIBER

for men

Style Microfiber socks offer microfiber softness for your professional and everyday wear.



Microfiber



Soft



Stylish

Compression Level

15-20mmHg

20-30mmHg

30-40mmHg

Features and Benefits

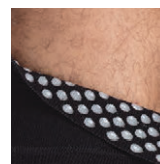
- 100% of microfiber sits next to skin for a soft feel
- Excellent breathability and moisture management for added comfort
- Double-covered inlay yarns provide comfort and allow product to easily glide on and off
- Sensinnov grip-top band on thigh style

Fibre Content

- 87% Nylon , 13% Spandex
(content can vary slightly by style)
- Latex free

Best Suited for

- Management of early stages of chronic venous disease
- Patients who prefer fashionable options
- Men with larger feet
- Long-distance travel



Silicone
dotted grip-top
band in calf



Sensinnov
grip-top band
in thigh

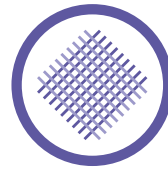
Style

MICROFIBER PATTERNS

for women & men

Style Microfiber Patterns socks combine ultimate comfort with a variety of fashionable colours and designs to spice up your wardrobe.

038



Microfiber



Stylish



Patterns

Compression Level

20-30mmHg

Features and Benefits

- 100% of microfiber sits next to skin for a soft feel
- Fashionable, durable socks for everyday wear
- Double-covered inlay yarns provide comfort and allow product to easily glide on and off
- Variety of patterns and colours available

Fibre Content

- 87% Nylon, 13% Spandex
(content can vary slightly by style)
- Latex free

Best Suited for

- Management of symptoms related to chronic venous disease
- Patients who prefer fashionable options
- Long-distance travel



Motion

MOTION

Push Yourself

When daily comfort for hard-working legs is required, put your clients in motion. Sigvaris Motion socks offer **all day strong** support for people with active lives.

Why choose **Motion**?

- Cushioned sole for added comfort.
- Durable thermoregulating wool.
- Moisture-wicking yarns.

360

Motion CUSHIONED COTTON

for women & men

Motion Cushioned Cotton is soft and breathable with a padded sole for optimal comfort, and is ideal for sensitive skin.



**Cushioned
Sole**



Cotton



**Sensitive
Skin**

Compression Level

20-30mmHg

Features and Benefits

- Supima cotton for highest level of comfort and breathability
- Extra-padded sole, heel and toe to protect feet
- Flat, low-friction toe seam
- Diabetic friendly

Fibre Content

- 64% Supima Cotton, 28% Nylon, 8% Spandex
- Latex free

Best Suited for

- Management of CVD symptoms
- People who stand for prolonged periods of time
- Patients with sensitive skin and toes
- Work shoes and boots
- Casual and sports shoes



Motion HIGH TECH

for women & men

Motion High Tech delivers optimal comfort where it counts with an anatomically-contoured shape and a cushioned sole.

412



Moisture Wicking



Anatomically Contoured



Colours

Compression Level

20-30mmHg

Features and Benefits

- High-tech fibres for improved thermoregulation
- Cushioned footbed, toe, and Achilles tendon zones for optimal comfort
- Additional compression in calf improves circulation

Fibre Content

- 64% Nylon, 17% Polyester, 19% Spandex
- Latex free

Best Suited for

- Management of symptoms related to chronic venous disease
- People who stand on their feet all day
- Walking and everyday activities
- Casual and occupational footwear
- Active individuals



Motion

THERMOREGULATING WOOL

for women & men

Motion Thermoregulating Wool combines the benefits of natural Merino wool with a cushioned sole, making it ideal for wherever life takes you!

422



Wool



Cushioned Sole



Thermoregulating

Compression Level

20-30mmHg

Features and Benefits

- Natural properties of wool make these socks odour-resistant
- Cushioned, padded soles help prevent blisters
- Double-covered inlay yarns provide comfort and allow product to easily glide on and off

Fibre Content

- 67% Fine Merino Wool, 26% Nylon, 7% Spandex
- Latex free

Best Suited for

- Management of symptoms related to chronic venous disease
- People who stand on their feet all day
- Work boots, steel-toed shoes, and most occupational footwear
- Outdoor work environments



Motion

SWISS MOUNTAIN SOCK for women & men

The Swiss Mountain Sock is moisture-wicking and anatomically contoured, with a padded sole and Achilles tendon for ultimate comfort on the go.

462



**Cushioned
Sole**



**Anatomically
Contoured**



**Moisture
Wicking**

Compression Level

20-30mmHg

Features and Benefits

- Thermal and odour control fibres to promote moisture management
- Footbed, toe and Achilles tendon cushion zones help reduce blisters
- Swiss precision graduated compression

Fibre Content

- 52% Nylon, 25% Polypropylene, 12% Polyester, 11% Spandex
- Latex free

Best Suited for

- People who work on their feet all day
- Work boots, steel-toed shoes, and most occupational footwear
- Walking and outdoor activities



Motion COMFORT

for women & men

Motion Comfort offers cushioned soles and moisture wicking to keep your legs feeling energized all day long.

850



**Cushioned
Sole**



Durable



**Moisture
Wicking**

Compression Level

20-30mmHg

Features and Benefits

- NILIT® Aquarius fibres provide moisture wicking to keep feet dry and comfortable
- Cushioned soles to absorb impact and help prevent blisters
- Smooth, flat toe seam

Fibre Content

- 86% Nylon, 14% Spandex
- Latex free

Best Suited for

- Management of symptoms related to chronic venous disease
- Healthcare professionals
- Uniforms requiring black or solid colour
- Business travelers
- Individuals working in physically-demanding occupations
- Active individuals



Specialty



SPECIALTY

Some patients may require a more specialized product to help relieve the effects of more advanced edemas and other complications of venous disorders.

SIGVARIS GROUP offers both upper and lower extremity specialty solutions that have a higher level of containment and durability while providing the same comfort.

Why choose **Specialty**?

- Specific medical needs.
- Need low fatigue fibers.
- Natural rubber.

500

Specialty NATURAL RUBBER

for women & men

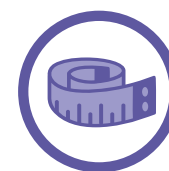
Natural Rubber offers patients a durable, long-term high-containment solution for compression therapy with minimal fibre fatigue throughout the day.



Natural Rubber



Durable



Wide Size Range

Compression Level

30-40mmHg

40-50mmHg

50-60mmHg

Features and Benefits

- Ideal for patients with more serious indications
- Unique sizing for a custom-like fit
- Comfortable grip-top band on thigh styles to prevent slipping
- Caution: contains natural rubber latex that may cause allergic reaction

Fibre Content

- 70% Nylon, 30% Natural Latex Rubber
- 75% Nylon, 20% Natural Latex Rubber, 5% other fibres (Pantyhose style)

Best Suited for

- Severe varicosities
- Chronic edema post DVT
- Severe venous stasis
- Prevention of ulcer recurrence
- Early stages of lymphedema
- Active venous ulcers



Silicone
dotted grip-top
band in thigh

Specialty ADVANCE ARMSLEEVE

for women & men

The Advance Armsleeve combines the ultimate softness with silver ion properties and a Sensinnov grip-top band that's ideal for all-day comfort and effectiveness.

910



**Moisture
Wicking**



**Sensinnov
Grip-top
Band**



Breathable

Compression Level

15-20mmHg

20-30mmHg

30-40mmHg

Features and Benefits

- Ideal for patients with arm lymphedema or post-mastectomy care
- Sensinnov top-band ensures armsleeve stays in place all day long
- Provides moisture wicking properties to keep skin dry and comfortable
- Breathable to provide comfortable, year-round wear

Fibre Content

- 50% Nylon, 28% Rayon, 22% Spandex
(Content can vary slightly by style)
- Latex free

Best Suited for

- Early stages of lymphedema
- Patients with arm lymphedema
- Post-mastectomy care



**Sensinnov
grip-top
band**



CONSUMER HEALTH CARE

Improve leg health with a simple change of socks.

For many people, experiencing tired or achy legs is the first step in learning more about the health benefits of graduated compression.

The SIGVARIS CONSUMER HEALTH CARE line introduces many of the therapeutic benefits of graduated compression with stylish options in a simplified sizing system. Consumers will be able to find their new favourite pair of socks or hosiery with SIGVARIS.

SIGVARIS

146/186

CASUAL COTTON

for women & men

Compression Level

15-20mmHg

Features and Benefits

- » Made with premium Supima Cotton for optimum softness and durability
- » Flat, low-friction toe seam to prevent irritation
- » Soft, stretchable knit-in band prevents pinching

Fibre Content

- » 66% Supima Cotton, 26% Nylon, 8% Spandex
- » Latex free

Best Suited for

- » Tired, heavy, restless, aching legs
- » Travelers, occupational leg health risks, expecting mothers, family history of chronic venous disorder



CUSHIONED COTTON

for women & men

Compression Level

15–20mmHg

Also available in 20–30mmHg, see page 30

Features and Benefits

- » Cushioned sole, heel and toe area to protect feet
- » Flat, low-friction toe seam
- » Soft, stretchable knit-in calf band prevents pinching
- » Ideal for everyday wear and for sensitive skin
- » Suitable for patients with diabetes
- » No compression in heel and instep for ease of donning

Fibre Content

- » 68% Supima Cotton, 25% Nylon, 7% Spandex
- » Latex-Free

Best Suited for

- » Tired, heavy, restless, aching legs
- » Travelers, occupational leg health risks, expecting mothers, family history of chronic venous disorders



SEA ISLAND COTTON

for women & men

Compression Level

15-20mmHg

Also available in 20-30mmHg, see page 20

Features and Benefits

- » Knitted from the world's rarest cotton
- » Sea Island Cotton yarns are lightweight and have great strength, a silky luster, and an incredibly soft feel
- » Breathable and comfortable for sensitive skin
- » Ideal for travel and everyday wear

Fibre Content

- » 43% Sea Island Cotton, 39% Nylon, 11% Spandex, 7% Supima Cotton
- » Latex-Free

Best Suited for

- » Tired, heavy, restless, aching legs
- » Travelers, occupational leg health risks, expecting mothers, family history of chronic venous disorder



ALL SEASON MERINO WOOL

for women & men

Compression Level

15-20mmHg

Also available in 20-30mmHg, see page 22

Features and Benefits

- » Soft, comfortable and itch-free
- » Natural properties of wool make these socks odour resistant
- » Thermoregulating for year-round wear and keeps feet dry

Fibre Content

- » 53% Extra-fine Merino Wool, 38% Nylon, 9% Spandex
- » Latex-Free

Best Suited for

- » Tired, heavy, restless, aching legs
- » Travelers, occupational leg health risks, expecting mothers, family history of chronic venous disorder



ZURICH
COLLECTION

MICROFIBER SHADES

for women & men

Compression Level

15-20mmHg

Also available in 20-30mmHg, see page 26

Features and Benefits

- » Advanced microfiber technology for ultimate comfort
- » Glides on and off with ease
- » Excellent breathability and moisture management
- » Soft and durable sock for everyday wear
- » Variety of patterns and colours available

Fibre Content

- » 87% Nylon, 13% Spandex
- » Latex-Free

Best Suited for

- » Tired, heavy, restless, aching legs
- » Travelers, occupational leg health risks, expecting mothers, family history of chronic venous disorder



SHEER FASHION

for women

Compression Level

15-20mmHg

Features and Benefits

- » Fabric feels soft against the skin
- » Incredible sheer design in a variety of fashionable colours
- » Sheer toe and heel area
- » Comfortable stretch is excellent for everyday wear
- » Cotton-lined gusset on pantyhose styles

Fibre Content

- » 79% Nylon, 21% Spandex
- » Content can vary slightly by style
- » Latex-Free

Best Suited for

- » Tired, heavy, restless, aching legs
- » Travelers, occupational leg health risks, expecting mothers, family history of chronic venous disorder



15-20mmHg
Closed Toe Calf Size B in Taupe

120CB29



15-20mmHg
Closed Toe Pantyhose Size C in Black

120PC99

SOFT SILHOUETTE LEGGINGS

for women

Compression Level

15-20mmHg

Features and Benefits

- » Stylish, subtle ribbed design looks chic and pairs perfectly with dresses, blouses, tunics and shirts
- » Comfort-stretch waist band provides a seamless look for all-day wearing comfort
- » Advanced soft stretch microfiber fabric shapes legs and smooths skin

Fibre Content

- » 83% Nylon, 17% Spandex
- » Latex-Free

Best Suited for

- » Tired, heavy, restless, aching legs,
- » Occupational leg health risks, family history of chronic venous disorders



BUSINESS CASUAL

for men

Compression Level

15-20mmHg

Features and Benefits

- » Stretchable toe fabric and heel design increase comfort and durability
- » Classic ribbed look for everyday wear
- » Wide, non-binding top band for comfortable fit
- » Soft, microfiber inlay yarns

Fibre Content

- » 88% Nylon, 12% Spandex
- » Latex-Free

Best Suited for

- » Tired, heavy, restless, aching legs,
- » Travelers, occupational leg health risks, family history of chronic venous disorders



ATHLETIC RECOVERY SOCKS

for women & men

Compression Level

15-20mmHg

Features and Benefits

- » Helps reduce lactic acid buildup
- » Comfortable and easy to put on and take off
- » *drirelease* yarns provides moisture wicking and odour control
- » No compression in heel and instep for ease of donning

Fibre Content

- » 67% *drirelease* Polyester (57% Polyester, 10% Cotton), 26% Nylon, 7% Spandex
- » Latex-Free

Best Suited for

- » Tired, heavy, restless, aching legs
- » Post-workout recovery
- » Mild athletic activity, walking



MERINO OUTDOOR SOCKS

for women & men

Compression Level

15–20mmHg

Also available in 20–30mmHg, see page 34

Features and Benefits

- » Soft, comfortable and itch-free
- » Natural properties of wool make these socks odour-resistant
- » Mesh flex zones for comfort and ventilation
- » Cushioned, padded soles protect against blisters
- » No compression in heel and instep for ease of donning

Fibre Content

- » 67% Fine Merino Wool, 26% Nylon, 7% Spandex
- » Latex-Free

Best Suited for

- » Tired, heavy, restless, aching legs
- » Hiking, fishing & hunting
- » Outdoor sports and walking



EVERSOFT DIABETIC SOCKS

for women & men

Compression Level

8-15mmHg

Features and Benefits

- » Thick, padded soles, heels, and toes for comfort and protection
- » Flat, low friction toe seam
- » Soft, stretchable knit-in band prevents pinching
- » Compression from ankle to knee, compression-free foot

Fibre Content

- » 67% *drirelease* Polyester (57% Polyester, 10% Cotton), 26% Nylon, 7% Spandex
- » Latex-Free

Best Suited for

- » Individuals with diabetes
- » Individuals with limited dexterity or lower tolerance for compression
- » Individuals with sensitive skin



PERFORMANCE SLEEVES

for women & men

Compression Level

20-30mmHg

Features and Benefits

- » Fabric resists deterioration in salt, chlorinated or fresh water
- » Stabilizes and diminishes vibrations of active muscles
- » Quick drying
- » High-visibility reflective transfer

Fibre Content

- » 75% Nylon, 25% Spandex
- » Latex-Free

Best Suited for

- » Running, triathlons, endurance sports and gym workouts
- » Team sports



Inelastic Wraps



INELASTIC WRAPS

The Sigvaris line of products for medically complex extremities (MCE) is for the treatment and management of conditions impacting the lymphatic and venous systems.

The product portfolio contains ready-to-wear garments for the active treatment of lymphedema and for patients managing chronic venous diseases in the upper and lower extremities.

SIGVARIS is looking towards a brighter future with new therapies for complex venous and lymphatic diseases. Our inelastic wraps deliver maximum therapeutic results with increased patient compliance.

Why choose **Inelastic Wraps**?

- Adjustable pressure.
- Large variety of solutions.

Compreboot Lite

Variable compression



Features

- Ultra-thin profile that easily fits into most footwear
- Highly adjustable design (may be trimmed to fit)
- Ideal for mild edema/lymphedema
- Breathable stretch fabric conforms to ankle
- Provides mild, therapeutic compression
- Available in Black only



Compreboot Standard

Variable compression



Features

- 4-way stretch for firm compression around ankle
- Included with Compreflex Standard Calf & Foot
- Ideal for mild-moderate edema/lymphedema
- Features neoprene material with hook and loop tabs
- Open heel and toe
- Provides moderate, therapeutic compression
- Available in Beige and Black



Compreboot Plus

Variable compression



Features

- Chipped foam lining
- Ideal for chronic/acute edema/lymphedema
- Removable gripper patches provide traction
- Straps are removable for custom positioning or replacement
- Provides moderate, therapeutic compression
- Available in Black only

